



With the beautiful Tobique River flowing peacefully past its doorsteps, Widow Everett Lodge is truly a nature lover's escape. Nestled in the spectacular wilderness of New Brunswick's Tobique River Valley, Widow Everett offers extraordinary opportunities to explore the splendor of nature. Hunters always return from the fresh-scented Tobique forests with a story to tell. Anglers will be rewarded with an equally memorable fishing experience on the region's legendary waters.



Widow Everett Lodge is surrounded by some of the most inviting natural attractions in Atlantic Canada. A breathtaking view



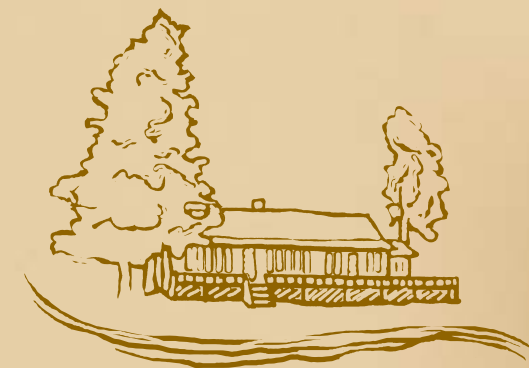
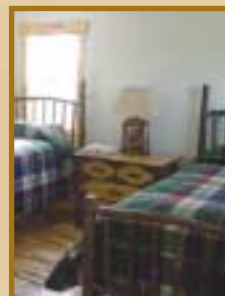
of the northern New Brunswick landscape draws hikers to nearby Mount Carleton, the highest peak in the Maritimes. Snowmobilers can cruise leisurely across the province's most scenic and exhilarating trails.



A quiet canoe ride down the river provides peaceful solitude and a comforting change of pace. In this tranquil setting, relaxation is the primary responsibility.



Above all, Widow Everett is a place to enjoy the precious company of friends and family. Gather for some home-baked beans or Tobique fiddleheads in Cora's Lodge. Watch eagles glide high above the treetops from Seth's Lookout, or admire the whitetails as they graze alongside Willie's Bunkhouse. We invite you to share in the natural beauty and serenity that the Tobique has to offer. Welcome to Widow Everett Lodge!



## WIDOW EVERETT LODGE

"Where the clear, running Tobique is flowing so free,  
Oh that is the place where I'm longing to be."

- HAZEL MACQUEEN



- TCH from Moncton/Nova Scotia
- TCH from Edmundston/Quebec
- Renous Hwy from Moncton/Nova Scotia
- From Campbellton
- From Bathurst
- From Bangor, Maine
- TCH = Trans-Canada Highway

### From Barrett's Woodstock head office:

- Follow TCH #2 West approx 75 km (45 min) to Perth-Andover. Take Perth-Andover Exit 115 (signs indicate Appalachian Range Route).
- From Exit 115, travel approx 2 km into Perth-Andover until you reach the Perth-Andover bridge to your right.
- Cross the bridge and take a left onto Perth Main St.
- Travel approx 0.5 km down Perth Main St. and veer right (up a hill) onto Rte 109 East toward Plaster Rock.
- Travel for approx 20 km (15 min) until you reach a bridge in Arthurette. Turn left onto the Arthurette bridge, following signs indicating Rte 109 East to Plaster Rock. Take a right off the bridge toward Plaster Rock.
- Travel approx 15 km (10 min) into Plaster Rock. You will reach a four-way intersection with an Irving gas station to your immediate right. Turn left at the intersection, onto Rte 108 West toward Mount Carleton. After approx 5 km, you will reach a set of flashing amber lights where Rte 108 West joins with Rte 385 North. Continue heading straight through the lights and onto Rte 385 North toward Mount Carleton.
- Follow Rte 385 North for approx 20 km (15 min) to Everett. Watch closely to your right for a sign reading 'Barrett Lane'. Turn onto Barrett Lane (a private gravel driveway). Welcome to Widow Everett Lodge!

**Approx distance: 140 km · Approx time: 1 hr, 35 min**

### From Nova Scotia - TCH route:

#### **smoother route, recommended during wintry weather**

- Follow the TCH #104 West into New Brunswick. Upon entering New Brunswick, TCH #104 West becomes TCH #2 West.
- Remain on the TCH #2 West, through Moncton (approx 55 km from NS border) and on through Fredericton (approx 180 km from Moncton)
- Remaining on the #2 West, travel another 175 km (1 hr, 45 min) from Fredericton to Perth-Andover. Take Perth-Andover Exit 115 off the #2 (signs indicate Appalachian Range Route).
- Follow directions as written in "From Barrett's Woodstock head office", reading from the second bullet point onward.

**From NS border — Approx distance: 475 km · Approx time: 4 hrs, 30 min**

### From Nova Scotia - Renous Hwy route:

#### **slightly faster and shorter route, more isolated and challenging drive**

- Follow the TCH #104 West into New Brunswick. Upon entering New Brunswick, TCH #104 West becomes TCH #2 West.
- Follow the #2 for approx 65 km (40 min) to Moncton. Take Exit 450 in Moncton (sign for exit reads Magnetic Hill and Miramichi; you will see a McDonald's restaurant at the exit)
- Turn right off Exit 450 onto Mountain Rd. Take a left onto Rte 126 North immediately after the McDonald's.
- Follow Rte 126 North for approx 2 km and turn right onto Rte 126 North toward Miramichi.
- Follow Rte 126 North for approx 75 km (50 min) to Rogersville.
- Continue past Rogersville for another 20 km (15 min) to Barnaby River. Watch closely for a sign reading 'Barnaby Rd'.
- Turn left off Rte 126 onto Barnaby Rd. Remaining to the right, follow the North Barnaby River Road for approx 8 km until the road intersects with Rte 118.
- Turn left onto Rte 118 toward Quarryville and Renous.

- Travel for approx 15 km (10 min) toward Renous. You will come to the Quarryville bridge. Veer right onto the bridge, following signs indicating Rte 108 (the Renous Hwy) to Plaster Rock.
- Turn left off the bridge, onto Rte 108 toward Plaster Rock. Follow Rte 108 West approx 140 km (90 min) to Plaster Rock.
- Upon entering Plaster Rock, you will reach a four-way intersection with an Irving gas station to your left. Continue straight through the intersection, remaining on Rte 108 West toward Mount Carleton. After approx 5 km, you will reach a set of flashing amber lights where Rte 108 West joins with Rte 385 North. Continue heading straight through the lights and onto Rte 385 North toward Mount Carleton.
- Follow Rte 385 North for approx 20 km (15 min) to Everett. Watch closely to your right for a sign reading 'Barrett Lane'. Turn onto Barrett Lane (a private gravel driveway). Welcome to Widow Everett Lodge!

**From NS border — Approx distance: 350 km · Approx time: 4 hrs**

### From Bathurst:

- Follow Rte 180 West toward Saint-Quentin for approx 105 km (75 min)
- Turn left onto Rte 385 South toward Mount Carleton and Plaster Rock

**OR**

### From Campbellton:

- Follow Rte 17 approx 85 km (45 min) to Saint-Quentin. Rte 17 becomes Rue Canada upon entering Saint-Quentin.
- Turn left off Rue Canada onto Rte 180 (Rue Mgr. Martin) East toward Bathurst and Mount Carleton.
- Travel approx 30 km (20 min) east on Rte 180. Turn right onto Rte 385 South toward Mount Carleton and Plaster Rock.

**THEN**

- Travel approx 45 km (35 min) down Rte 385 South to Riley Brook.
- Continue on Rte 385 South for approx 15 km (10 min) past Riley Brook to Everett. Watch closely to the left for a sign reading 'Barrett Lane'. Turn onto Barrett Lane (a private gravel driveway). Welcome to Widow Everett Lodge!

**From Bathurst — Approx distance: 170 km · Approx time: 2 hrs**

**From Campbellton — Approx distance: 175 km · Approx time: 1 hr, 45 min**

### From Edmundston/Quebec:

- Follow Highway 185 East into New Brunswick. Upon entering New Brunswick, Highway 185 becomes TCH #2 East.
- Follow TCH #2 East for approx 20 km (10 min) to Edmundston.
- Continue traveling south on TCH #2 approx 60 km (35 min) to Grand Falls.
- Take Exit 75 off TCH #2 onto Madawaska Road (Rte 108) in Grand Falls.
- Follow Rte 108 East through Grand Falls, continue approx 35 km (25 min) to Plaster Rock.
- Upon entering Plaster Rock, turn left onto Rte 385 North toward Nictau and Mount Carleton.
- Follow Rte 385 North for approx 20 km (15 min) to Everett. Watch closely to your right for a sign reading 'Barrett Lane'. Turn onto Barrett Lane (a private gravel driveway). Welcome to Widow Everett Lodge!

**From PQ-NB border — Approx distance: 135 km · Approx time: 1 hr, 30 min**

### From Bangor, Maine:

- Follow I-95 North approx 200 km (2 hrs) to the Houlton border crossing.
- Upon entering Canada, follow #95 approx 15 km (10 min) to Woodstock. Follow signs indicating TCH #2 West to Edmundston.
- Follow directions as written in "From Barrett's Woodstock head office".

**From Bangor, Maine — Approx distance: 375 km · Approx time: 4 hrs**